



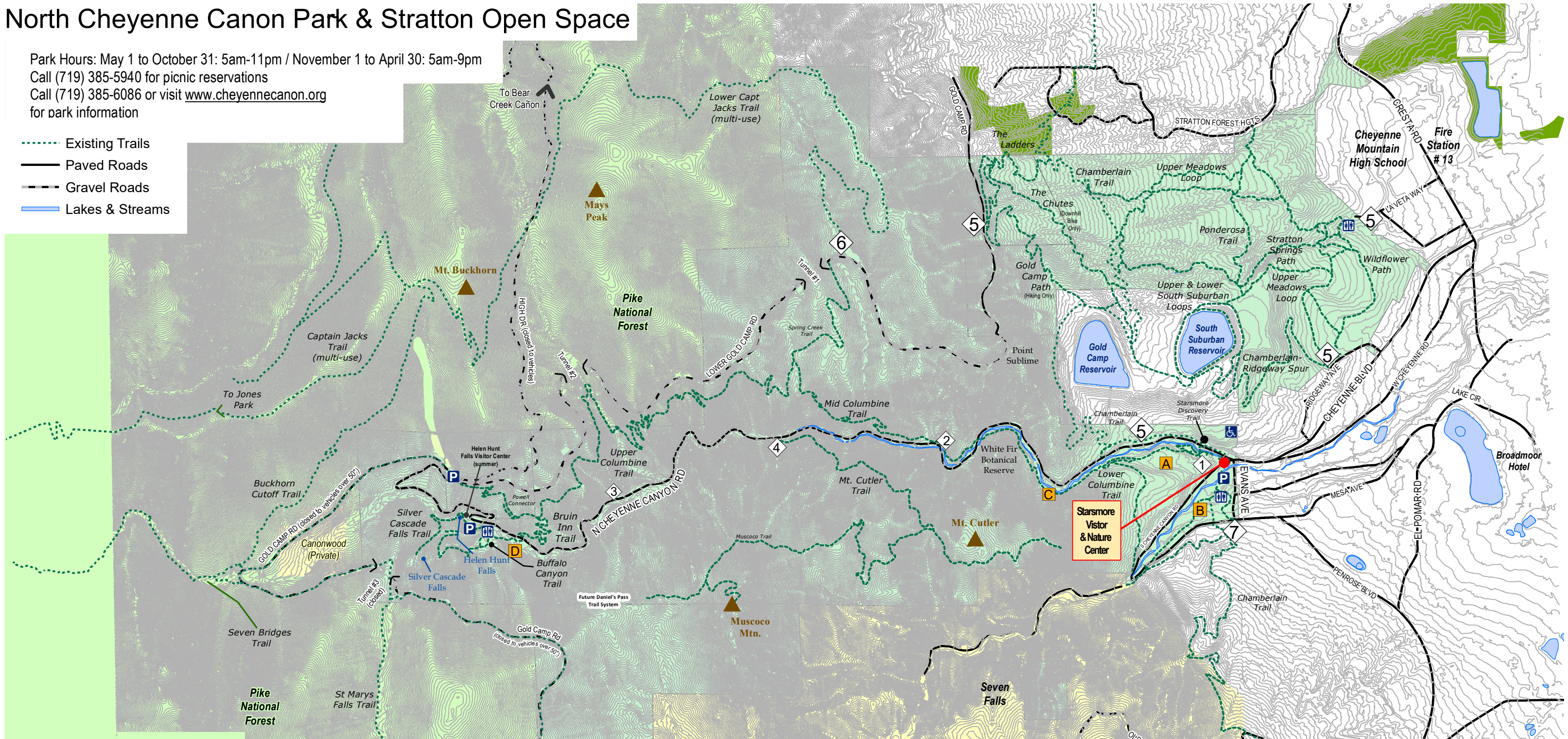


# North Cheyenne Canon Park & Stratton Open Space

Park Hours: May 1 to October 31: 5am-11pm / November 1 to April 30: 5am-9pm  
 Call (719) 385-5940 for picnic reservations  
 Call (719) 385-6086 or visit [www.cheyennecanon.org](http://www.cheyennecanon.org)  
 for park information

-  Existing Trails
-  Paved Roads
-  Gravel Roads
-  Lakes & Streams



## Picnic Areas:

- A Mesa Picnic Area (reservation only)
- B South Canon Picnic Area
- C Picnic Area
- D Bruin Inn Picnic Area

## Trailheads:

- (All trailheads have parking areas)
- 1 Lower Columbine Trailhead
  - 2 Mid Columbine Trailhead
  - 3 Future Daniel's Pass Trailhead
  - 4 Mt. Cutler & Muscoco Trailheads
  - 5 Stratton Open Space Trailheads
  - 6 Lower Capt Jacks Trailhead
  - 7 South Chamberlain Trailhead

## TRAIL DISTANCES:




**NORTH CHEYENNE CANON**  
 Starsmore Discovery Trail - 0.2 mile  
 Columbine Trail: 4 miles (From Lower to Upper Trailhead)  
 Lower Columbine - Mid Columbine: 1 mile  
 Mid Columbine - Buena Vista Link: 1.65 miles  
 Buena Vista Link - Upper Columbine: 1.35 miles  
 Powell Connector - 0.4 mile  
 Bruin Inn Trail - 0.4 mile  
 Buffalo Canyon Trail - 0.6 mile  
 Silver Cascade Falls Trail: 0.3 mile  
 Mt. Muscoco Trail: 2.1 miles (to summit)  
 Mt. Cutler Trail: 1.1 miles (to overlook)  
 Lower Capt. Jacks Trail: 2.5 miles (from trailhead to top of High Dr)

## STRATTON OPEN SPACE

Chamberlain Trail: 1.7 miles  
 Chamberlain-Ridgeway Spur: 1.15 miles  
 Chutes Trail: 1.1 mile  
 Gold Camp Path: 0.65 mile  
 Ponderosa Trail: 0.65 mile  
 South Suburban Lower Loop: 0.3 mile  
 South Suburban Upper Loop: 0.55 miles  
 Stratton Springs Path: 0.3 mile  
 Upper Meadows Loop: 1.75 miles  
 Wildflower Path: 0.65 mile



Map Version Date: 6/4/2020

-  Parking
-  Restrooms
-  Wheelchair Accessible



NOT TO SCALE